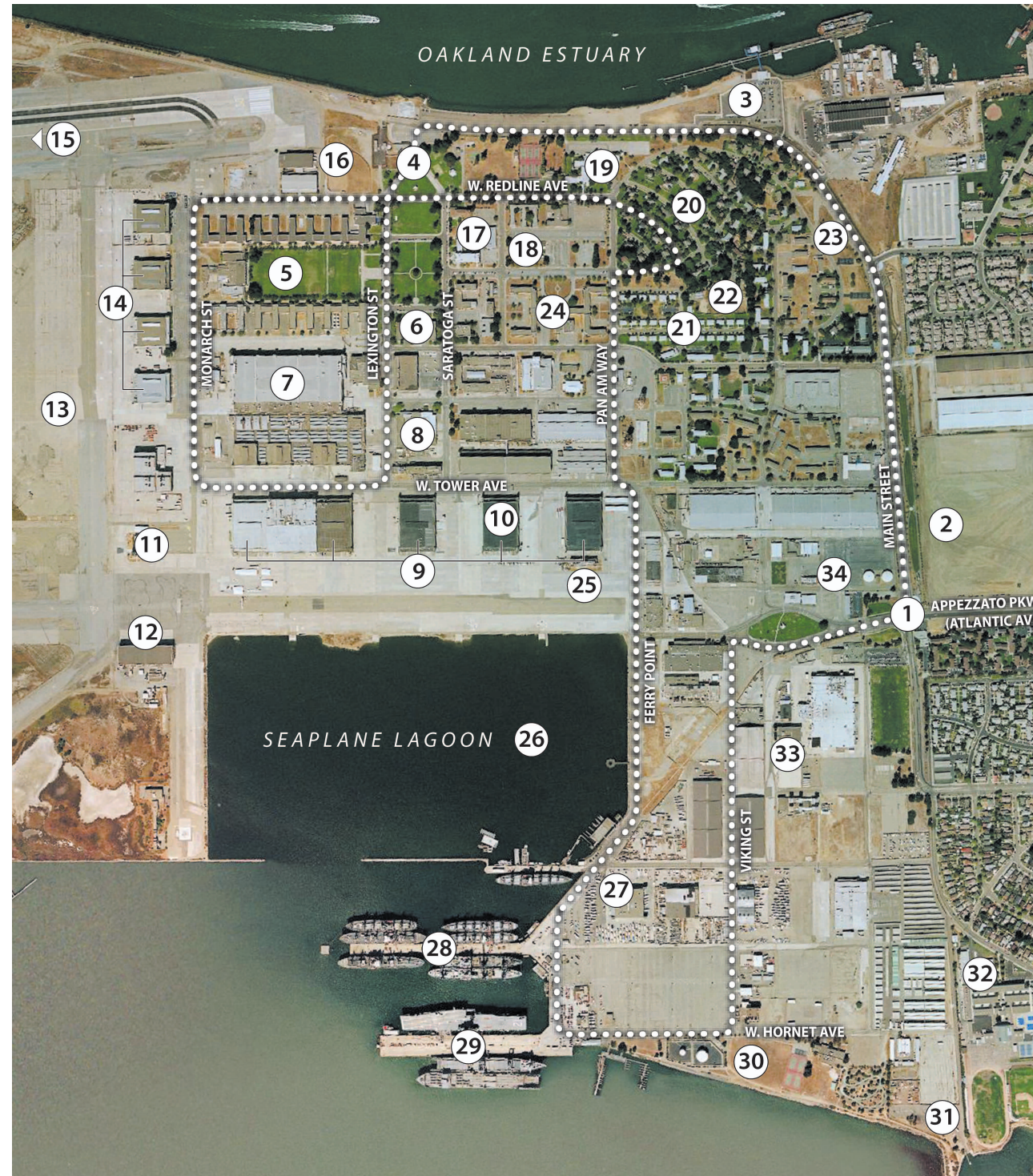


Self-Guided Tour... Alameda Point is Open to the Public

- Start of Tour.** Ralph J. Appezzato Parkway (Atlantic Avenue) and Main Street. East Gate of the former Alameda Naval Air Station (NAS). Head north on Main Street towards the Oakland Estuary.
- Bayport.** The first new development at the former Naval Air Station.
- Ferry Dock.** Service to Oakland and San Francisco. Proposed to be moved to Seaplane Lagoon (#26).
- Main Gate.** The original entrance to the NAS. You are now entering a Historic District.
- Bachelors Enlisted Men Quarters.** Former dormitory and mess hall for enlisted men. Now partially occupied by office uses and AP&T.
- City Hall West.** The former Naval Air Station head-quarters. A plaque across the street marks the western terminus of the First Transcontinental Railroad (1869).
- Building 5.** At almost one million square feet, this is by far the largest building at Alameda Point. Currently vacant.
- Fire Station.** Currently vacant. This historic building is expected to remain and serve Alameda Point.
- Seaplane Hangar Row.** This five-building row of hangars served seaplanes that climbed ramps from the Seaplane Lagoon. The two west hangars have been joined together.
- Bladium Sports Club.** A 120,000 square foot sports facility.
- Flight Control Tower.** Served the runways to the west (#13). Currently offices of Alameda Point Community Partners, the selected master developer of Alameda Point.
- Antiques by the Bay.** Antiques and Collectibles Faire first Sunday of every month.
- Former Runways.** Home to endangered Least Tern colony. Proposed National Wildlife Refuge.
- Hangar Row.** This four-building row of hangars served the runways (#13). St. George Spirits occupies the second hangar from the north.
- Proposed Golf Course, Hotel and Conference Center.**
- City of Alameda Sports Complex.** CityView Skate Park and Alameda Point Gym. Proposed regional sports complex. Temporary baseball and soccer fields are now under construction.



- Auctions by the Bay.** A major tenant at Alameda Point, also located at #12. Besides auctions, site of Movie Classics by the Bay.
- Bay Area School of Enterprise (BASE).** A public charter high school. Also site of HOME Sweet HOME Preschool.
- O' Club.** The former Officer's Club, recently renamed in honor of former City Councilmember Al DeWitt.
- "Big Whites".** Former senior officer housing, now available for rental.
- Bungalows.** Former Navy family housing, now part of the Alameda Point Collaborative (APC). APC is a supportive housing program serving 200 formerly homeless households (approximately 500 individuals).
- Alameda Point Community Garden.** Garden plots are available to anyone living or working at Alameda Point.
- Ploughshares Nursery.** Site of a retail native and organic plant nursery being built by APC.
- Bachelor Officers Quarters.** Built in 1941. Now vacant.
- Air Terminal.** Departure point of Pan Am China Clipper which provided trans-Pacific air service from 1935 to 1939. The terminal was built in 1942 and is the location of the Alameda Naval Air Museum.
- Seaplane Lagoon.** Proposed location of future ferry terminal and marina.
- Nelson's Marine Boat Yard and Nelson Yachts.**
- U.S. Department of Transportation's Maritime Administration (MARAD).** Ready Reserve Force (RRF) ships.
- U.S.S. Hornet Museum.** The aircraft carrier is open to the public seven days a week from 10 - 5 except Tuesdays when it closes at 3:00 p.m.
- Proposed 27-Acre Park.**
- Encinal Boat Ramp, City of Alameda.** Free public boat launching ramp.
- Encinal High School.**
- CyberTran.** Light weight rail transit system developers.
- The Source Bakery and Café.** Stop in for lunch or a refreshment.